

## M SERIES PARTS LIST

|    |  |          |  |          |
|----|--|----------|--|----------|
| 1  | L.H. Column.....   | N752     | SPOA30.....                                  | N384     |
| 2  | R.H. Column.....   | N755     | SPOA30 EH-1 MODEL.....                       | N385     |
| 3  | Column Extension   |          | SPOA30 EH-2 MODEL.....                       | N386     |
|    | Standard Height.....   | N470     | SPOA40.....                                  | N372     |
|    | EH-1 MODEL.....  | N471     | SPOA40 EH-1 MODEL.....                       | N378     |
|    | EH-2 MODEL.....  | N472     | SPOA40 EH-2 MODEL.....                       | N373     |
|    | EH-4 MODEL (SPO40 only).....                                 | N474     | SPO40.....                                   | N374     |
| 4  | Carriage Yoke.....   | N822     | SPO40 EH-1 MODEL.....                        | N379     |
| 5  | Arm Pin.....   | N2154    | SPO40 EH-2 MODEL.....                        | N375     |
| 6  | 3/8"-16NC x 3/4" Long Carriage Bolts.....                    | N/A      | SPO40 EH-4 MODEL.....                        | N376     |
| 7  | 71" Hydraulic Cylinder.....                                  | N382     | 40 Carriage Bumper.....                      | FA950    |
| *8 | Power Unit   |          | 41 Locking Latch Cable.....                  | FJ7595-1 |
|    | 1Ø (SPOA30) (F model).....                                   | *P1453   | SPO40 EH-4 Model.....                        | FJ7600   |
|    | 1Ø (SPOA40/SPO40) (F model).....                             | *P1456   | 42 Cable Guide.....                          | N618     |
|    | 3Ø (SPOA30) (D model).....                                   | *P1454   | 43 3/8"-16NC Flanged Locknut.....            | 40664    |
|    | 3Ø (SPOA40/SPO40) (D model).....                             | *P1047   | 44 Sheave Shaft.....                         | FJ7444-8 |
|    | 3Ø (SPOA30) (T model).....                                   | *P1455   | 45 1/4"-20NC x 3/4" HHCS Grade 5.....        | 40104    |
|    | 3Ø (SPOA40/SPO40) (T model).....                             | *P1457   | 46 Cable End Bracket.....                    | N619     |
| 9  | Power Unit Hose.....   | FJ837    | 47 Hose Clip.....                            | N383     |
| 10 | 5/16"-18NC x 1-1/2" HHCS.....                                | 40238    | 48 Front Shim.....                           | FJ7659-3 |
| 11 | 5/16" External Tooth Lockwasher.....                         | 40854    | 49 Horse Shoe Shim.....                      | FJ716-6  |
| 12 | 5/16"-18NC Hex Nut.....                                      | 40670    | 50 Tee.....                                  | FJ7668   |
| 13 | Actuator Pin Handle.....                                     | FJ7985-1 | 51 N/A.....                                  | N/A      |
| 14 | Actuator Pin.....  | N121-1   | 52 Photosensor Plug.....                     | FA5930-2 |
| 15 | Retaining Ring.....  | N119-3   | 53 1/4"-20NC Flanged Locknut.....            | 40641    |
| 16 | Arm Restraint Spring.....                                    | FJ7656-2 | 54 Spacer.....                               | FJ7871   |
| 17 | Strain Relief (1Ø Only).....                                 | P1164-4  | 55 Limit Switch Assembly.....                | N412     |
| 18 | Carriage Bumper (152mm Lg.).....                             | FA941    | 56 1/4" External Tooth Lockwasher.....       | 40779    |
| 19 | Arm Restraint Pawl.....                                      | N2121    | 57 3/8" External Tooth Lockwasher.....       | 40845    |
| 20 | Approach Bumper (457mm Lg.).....                             | FJ7391-1 | 58 1-1/2" Lg. Spring Pin.....                | 14427    |
| 21 | 5/8"-11NC Hex Nylon Insert Lock Nut.....                     | 40780    | 59 1/4"-20NC x 1" HHCS Grade 5.....          | 40108    |
| 22 | Truarc #5304-75 Klipping for 3/4" Shaft.....                 | 41411    | 60 Left Toe Guard.....                       | N137-1   |
| 23 | Sheave.....  | N377     | 61 Right Toe Guard.....                      | N138-1   |
| 24 | 1/4"-20NC Hex Nut.....                                       | 40627    | 62 Limit Switch.....                         | N411-1   |
| 25 | Sheave Cover.....  | N119-1   | 63 Push Nut.....                             | FC5209   |
| 26 | 1/4"-20NC x 3/8" Lg. PHMS Plated (2 pcs.).....               | 40063    | 64 L.H. Overhead (Outer).....                | N480-1   |
| 27 | Slider Block.....  | FJ7360   | 65 R.H. Overhead (Inner).....                | N481-1   |
| 28 | 20mm Concrete Anchor (10 req'd)W140210                       |          | 66 Bleeder Screw.....                        | N/A      |
| 29 | 1-1/2"O.D. x .760-.770" I.D. x .045" Thk. Mach. Bushing..... | 41388    | 67 Adapter Plate.....                        | FA7926   |
| 30 | 1/4"-20NC x 2-3/4" Hex Head Bolt.....                        | 40114    | 68 5/16-18NC x 1/2" Socket Flat Head MS..... | 40375    |
| 31 | 1/4"-20NC Nylon Insert Locknut.....                          | 41423    | 69 Control Panel                             |          |
| 32 | 1/4" Type A Plain Flat Washer                                |          | 1Ø.....                                      | FA7928   |
| 33 | Switch Bar Assembly  |          | 3Ø.....                                      | FA7927   |
|    | SPOA30.....  | N415     | 70 #8-32NC x 3/8" Lg. Hex SHCS.....          | 40087    |
|    | SPOA40/SPO40.....  | N467     | 71 Overhead Mounting Bracket.....            | N439     |
| 34 | Spotting Wheel Dish Kit.....                                 | FF729    |  |          |
| 35 | N/A.....   | N/A      |  |          |
| 36 | 3/8"-16NC x 3/4" Long Flanged HHCS.....                      | 40134    |  |          |
| 37 | Slider Block Shim.....                                       | N115     |  |          |
| 38 | Overhead Hose  |          |  |          |
|    | SPOA30.....  | FJ839    |  |          |
|    | SPOA30 EH-1 MODEL.....                                       | FJ842    |  |          |
|    | SPOA30 EH-2 MODEL.....                                       | FJ843    |  |          |
|    | SPOA40 and SPO40.....  | FJ839    |  |          |
|    | SPOA40 and SPO40 EH-1 MODEL.....                             | FJ842    |  |          |
|    | SPOA40 and SPO40 EH-2 MODEL.....                             | FJ843    |  |          |
|    | SPO40 EH-4 MODEL.....  | FJ845    |  |          |
| 39 | Equalizer Cables   |          |  |          |

### \*Notes: F, D, or T Model?

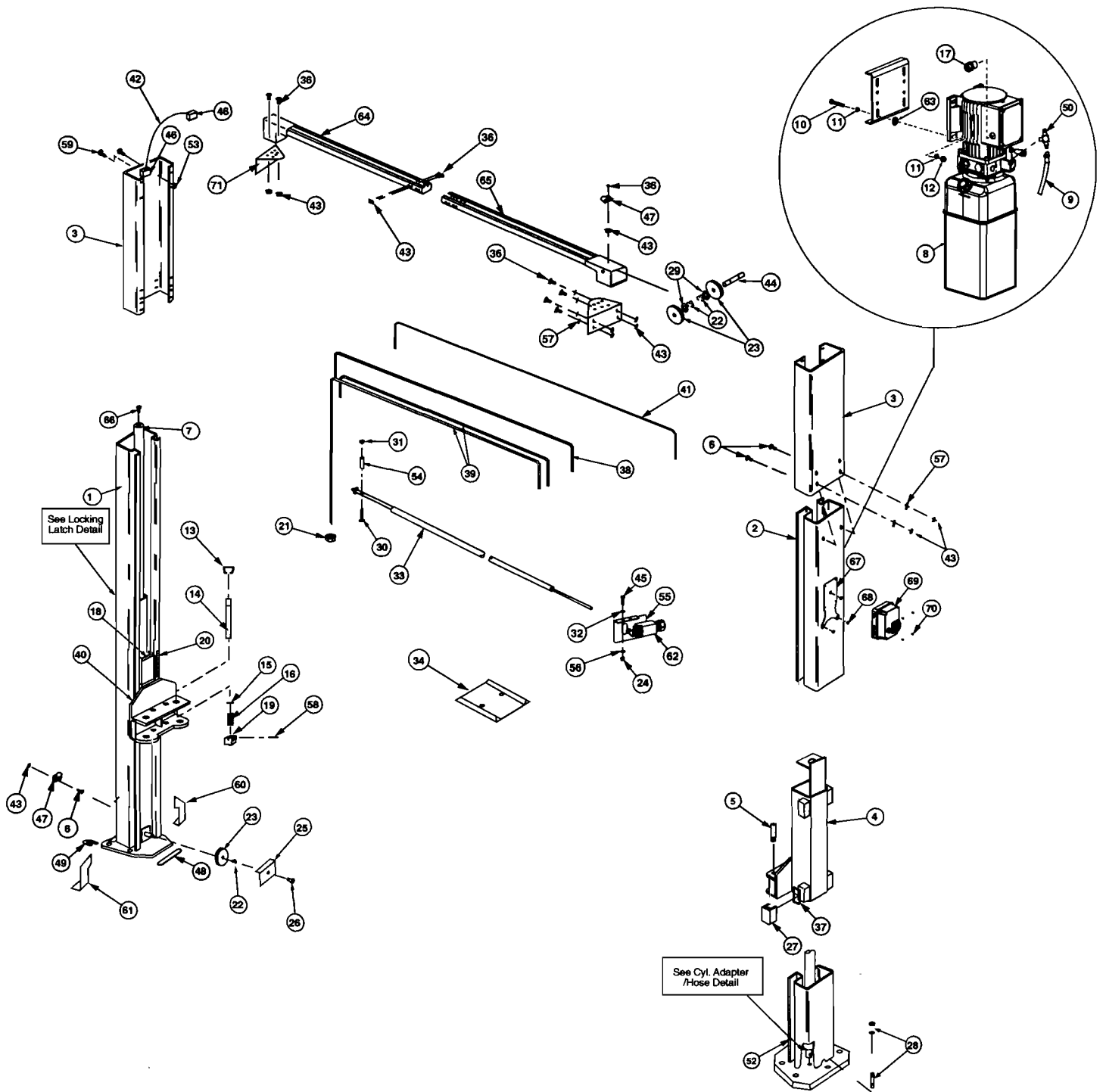
To find out if you have a **F, D, or T** model Power Unit look at the **4th letter from the end** of your lift model number.

EXAMPLE: SPOA30**M**D585 would be a **D Model**.

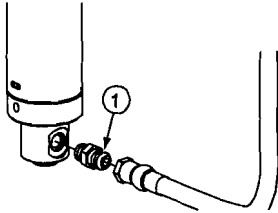


Model number can be found on a tag on the side of the lift.

# M SERIES PARTS LIST

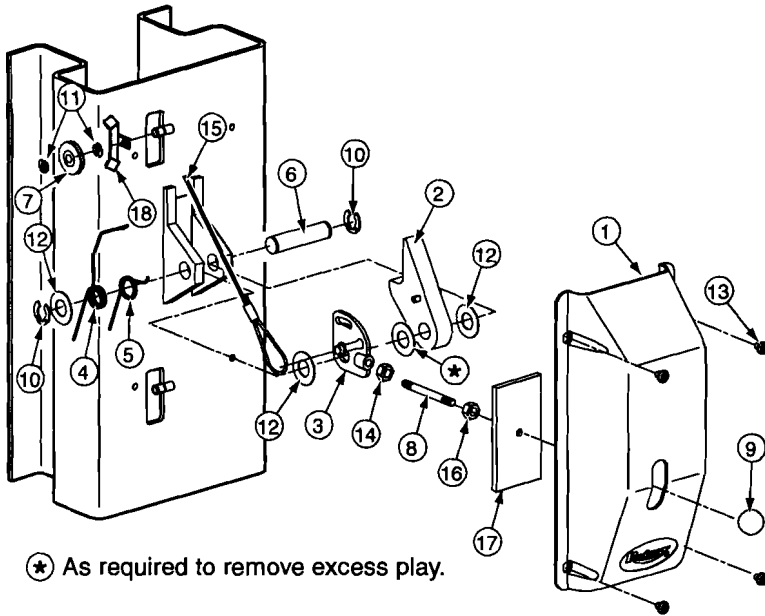


# M SERIES PARTS LIST



## CYLINDER ADAPTER/HOSE DETAIL PARTS LIST

| Item | Description           | Part No. |
|------|-----------------------|----------|
| 1    | Straight Adapter..... | FJ7352-3 |

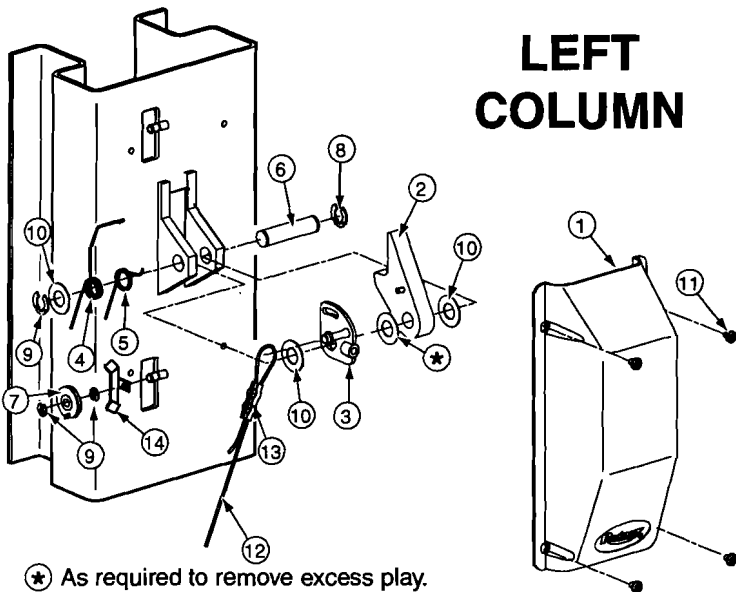


★ As required to remove excess play.

## RIGHT COLUMN

## LOCKING LATCH DETAIL PARTS LIST

| Item | Description   | Part No.  |
|------|---|-----------|
| 1    | Control Side Cover .....                            | FJ7452    |
| 2    | Locking Latch Dog .....                             | N616      |
| 3    | Control Plate .....                                 | FJ7594-2  |
| 4    | Spring .....  | FJ7566-10 |
| 5    | Spring .....  | FJ7382-9  |
| 6    | Latch Shaft.....                                    | FJ7382-34 |
| 7    | Locking Latch Sheave.....                           | FJ7322    |
| 8    | Handle .....  | FJ7382-18 |
| 9    | Ball Handle .....                                   | FC134-91  |
| 10   | Truarc Klipping #5304-75<br>(for 3/4" Shaft) .....  | 41411     |
| 11   | Truarc Klipping #5304-37<br>(for 3/8" Shaft) .....  | 41410     |
| 12   | 1-1/2" O.D. x 3/4" I.D. x .045"<br>Mach. Bush ..... | 41388     |
| 13   | 5/16"-18NC x 3/8" Lg. BHCS<br>(Allen Socket).....   | N/A       |
| 14   | 3/8" - 16NC Hex Jam Nut.....                        | 40658     |
| 15   | Locking Latch Cable .....                           | FJ7595-1  |
|      | EH-4 for SPO40 .....                                | FJ7600    |
| 16   | 1/2"-13NC Jam Nut (Spacer) .....                    | 40700     |
| 17   | Slot Cover .....                                    | N617      |
| 18   | Latch Sheave Cover .....                            | N64       |



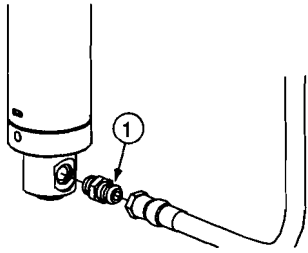
★ As required to remove excess play.

## LEFT COLUMN

## LOCKING LATCH DETAIL PARTS LIST

| Item | Description   | Part No.  |
|------|---|-----------|
| 1    | Latch Cover .....                                   | FJ7451    |
| 2    | Locking Latch Dog .....                             | N616      |
| 3    | Control Plate .....                                 | FJ7594-2  |
| 4    | Spring .....  | FJ7566-10 |
| 5    | Spring .....  | FJ7382-9  |
| 6    | Latch Shaft.....                                    | FJ7382-34 |
| 7    | Locking Latch Sheave.....                           | FJ7322    |
| 8    | Truarc Klipping #5304-75<br>(for 3/4" Shaft) .....  | 41411     |
| 9    | Truarc Klipping #5304-37<br>(for 3/8" Shaft) .....  | 41410     |
| 10   | 1-1/2" O.D. x 3/4" I.D. x .045"<br>Mach. Bush ..... | 41388     |
| 11   | 5/16"-18NC x 3/8" Lg. BHCS<br>(Allen Socket) .....  | N/A       |
| 12   | Locking Latch Cable .....                           | FJ7595-1  |
|      | EH-4 for SPO40 .....                                | FJ7600    |
| 13   | Latch Cable Clamp .....                             | N63-1     |
| 14   | Latch Sheave Cover .....                            | N64       |

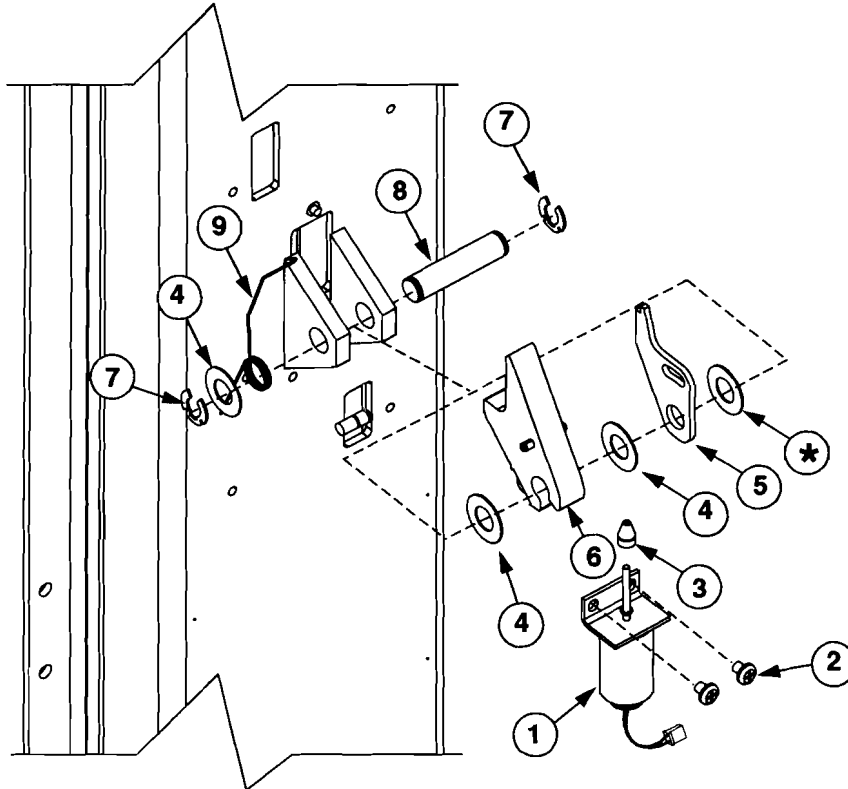
**E AND I SERIES PARTS LIST**



**CYLINDER ADAPTER/HOSE DETAIL PARTS LIST**

| Item | Description           | Part No. |
|------|-----------------------|----------|
| 1    | Straight Adapter..... | FJ7352-3 |

**SOLENOID / LOCKING LATCH ASSEMBLY**



**LOCKING LATCH DETAIL PARTS LIST**

| Item | Description                                    | Part No.  |
|------|--|-----------|
| 1    | Solenoid.....                                  | N613      |
| 2    | 5/16" - 3/8" PHMS.....                         | 40227     |
| 3    | Slider.....                                    | N613-1    |
| 4    | 1-1/2" O.D. x 3/4" I.D. x .045 Mach. Bush..... | 41388     |
| 5    | Latch Control Plate.....                       | N613-3    |
| 6    | Locking Latch.....                             | N616      |
| 7    | Truarc Klipring #5304-75 (for 3/4" Shaft)..... | 41411     |
| 8    | Latch Shaft.....                               | FJ7382-34 |
| 9    | Latch Spring.....                              | N613-2    |

## E AND I SERIES PARTS LIST

|  |  |
|--|--|
| <p>1 L.H. Column..... N752</p> <p>2 R.H. Column..... N752</p> <p>3 R.H. Column Extension<br/>Standard Height..... N470</p> <p>EH-1 MODEL..... N471</p> <p>EH-2 MODEL..... N472</p> <p>EH-4 MODEL (SPO40 Only)..... N474</p> <p>L.H. Column Extension<br/>Standard Height..... N485</p> <p>EH-1 MODEL..... N486</p> <p>EH-2 MODEL..... N487</p> <p>EH-4 MODEL (SPO40 Only)..... N489</p> <p>4 Carriage Yoke..... N822</p> <p>5 Arm Pin..... N2154</p> <p>6 1/4"-20NC Locknut..... 41423</p> <p>7 71"Hydraulic Cylinder..... N382</p> <p>*8 Power Unit</p> <p style="padding-left: 20px;">1Ø SPO40 (E model)..... *P1445</p> <p style="padding-left: 20px;">3Ø SPOA30 (E model)..... *P1429</p> <p style="padding-left: 20px;">3Ø SPOA40/SPO40 (E model)..... *P1165</p> <p style="padding-left: 20px;">3Ø SPOA30 (S model)..... *P1435</p> <p style="padding-left: 20px;">3Ø SPOA40/SPO40 (S model)..... *P1437</p> <p>9 Power Unit Hose..... N368</p> <p>10 5/16"-18NC x 1-1/2" HHCS (Full Thread)..... 40271</p> <p>11 Vibration Pad..... P1164-3</p> <p>12 5/16"-18NC Hex Nut..... 40670</p> <p>13 Actuator Pin Handle..... FJ7985-1</p> <p>14 Actuator Pin..... N121-1</p> <p>15 Retaining Pin..... N119-3</p> <p>16 Arm Restraint Spring..... FJ7656-2</p> <p>17 Bleeder Screw (Specify Manufacturer)..... N/A</p> <p>18 Carriage Bumper..... FA941</p> <p>19 Arm Restraint Pawl..... N2121</p> <p>20 Approach Bumper..... FJ927-1</p> <p>21 5/8"-11NC Hex Lock Nut..... 40743</p> <p>22 Truarc #5304-75 Klipping for 3/4" Shaft..... 41411</p> <p>23 Sheave..... N377</p> <p>24 Shim Kit..... FA5112</p> <p>25 Sheave Cover..... N119-1</p> <p>26 1/4"-20NC x 3/8" Lg. PHMS Plated (2 pcs.)..... 40063</p> <p>27 Slider Block..... FJ7360</p> <p>28 20mm Concrete Anchor..... W140210</p> <p>29 1-1/2" O.D. x .760-.770" I.D. x .045" Bushing.... 41388</p> <p>30 Wiring Chase..... FA928</p> <p>31 #8-32 Type B x 5/8" Lg. PHTS..... 41457</p> <p>32 Web Cover..... FA948</p> <p>33 Spacer..... FJ7871</p> <p>34 Spotting Wheel Dish Kit..... FF729</p> <p>35 N/A..... N/A</p> <p>36 3/8"-16 NC x 3/4" Long Flanged HHCS..... 40124</p> <p>37 Overhead Hose.....</p> <p style="padding-left: 20px;">Standard..... N369</p> <p style="padding-left: 20px;">EH-1/EH-2 MODEL..... N371</p> <p style="padding-left: 20px;">EH-4 MODEL (SPO40 Only)..... N370</p> <p>38 Equalizer Cables.....</p> <p style="padding-left: 20px;">SPOA30..... N384</p> <p style="padding-left: 20px;">SPOA30 EH-1 MODEL..... N385</p> <p style="padding-left: 20px;">SPOA30 EH-2 MODEL..... N386</p> <p style="padding-left: 20px;">SPOA40..... N372</p> <p style="padding-left: 20px;">SPOA40 EH-1 MODEL..... N378</p> <p style="padding-left: 20px;">SPOA40 EH-2 MODEL..... N373</p> <p style="padding-left: 20px;">SPO40..... N374</p> <p style="padding-left: 20px;">SPO40 EH-1 MODEL..... N379</p> <p style="padding-left: 20px;">SPO40 EH-2 MODEL..... N375</p> <p style="padding-left: 20px;">SPO40 EH-4 MODEL..... N376</p> <p>39 Horse Shoe Shim..... FJ716-6</p> <p>40 Front Shim..... FJ659-3</p> | <p>41 Limit Switch..... N411-1</p> <p>42 3/8"-16NC Flanged Locknut..... 40664</p> <p>43 Sheave Shaft..... FJ7444-8</p> <p>44 Slider Block Shim..... N115</p> <p>45 Male Extension With O-Ring..... N332</p> <p>46 Hose Clip..... N383</p> <p>47 1/4"-20NC x 2-3/4" Hex Head Bolt..... 40114</p> <p>48 1/4" Type A Flat Washer..... 40780</p> <p>49 Female Swivel Tee..... N331</p> <p>50 Switch Bar Assembly<br/>(SPOA30)..... N415</p> <p style="padding-left: 20px;">(SPOA40/SPO40)..... N467</p> <p>51 3/8"-16NC x 1/2" Flanged HHCS..... 40122</p> <p>52 1/4"-20NC x 3/4" HHCS Grade 5..... 40104</p> <p>53 1/4" External Tooth Lockwasher..... 40779</p> <p>54 1/4"-20NC Hex Nut..... 40627</p> <p>55 Limit Switch Assembly..... N412</p> <p>56 3/8" External Tooth Lockwasher..... 40845</p> <p>57 Spring Pin-1/4" dia. x 1-1/2" Lg. (Stainless)..... 14427</p> <p>58 Hose Grommet..... FA7180-32</p> <p>59 Screws for Control Panels And Tool Holders<br/>5/16" - 3/8" PHMS..... 10 REQ'D</p> <p>60 Wire Grommet..... FA7180-31</p> <p>61 Mounting Bracket..... N439</p> <p>62 Lower Photosensor Bracket..... N482</p> <p>63 3/8"-16NC x 3/4" Carriage Bolts..... N/A</p> <p>64 #12 Type B x 1/2"Lg. HWHTS..... 40057</p> <p>65 13" Bumper..... FA950</p> <p>66 Lower Photosensor..... N428-6</p> <p>67 Master Control Assembly</p> <p style="padding-left: 20px;">1Ø/LCD..... FA7307</p> <p style="padding-left: 20px;">1Ø/Non-LCD..... FA7306</p> <p style="padding-left: 20px;">3Ø/LCD..... FA7303</p> <p style="padding-left: 20px;">3Ø/Non-LCD..... FA7302</p> <p>68 Slave Control Panel..... FA7301</p> <p>69 Air Tool Holder..... FA5191</p> <p>70 L.H. Overhead (Outer)..... N480-1</p> <p>71 R.H. Overhead (Inner)..... N481-1</p> <p>72 Junction Box..... FA925</p> <p>73 Slave Control Cable Extension</p> <p style="padding-left: 20px;">EH-1 MODEL..... FA7180-42</p> <p style="padding-left: 20px;">EH-2 MODEL..... FA7180-43</p> <p style="padding-left: 20px;">EH-4 MODEL (SPO40 Only)..... FA7180-44</p> <p>74 E-Stop Cables</p> <p style="padding-left: 20px;">1Ø Standard..... FA7214-1</p> <p style="padding-left: 20px;">1Ø EH-1/EH-2 MODEL..... FA7310</p> <p style="padding-left: 20px;">1Ø EH-4 MODEL (SPO40 Only)..... FA7311</p> <p style="padding-left: 20px;">3Ø Standard..... FA7212-2</p> <p style="padding-left: 20px;">3Ø EH-1/EH-2 MODEL..... FA7212-7</p> <p style="padding-left: 20px;">3Ø EH-4 MODEL (SPO40 Only)..... FA7232-2</p> |
|--|--|

### \*Notes: E or S Model?

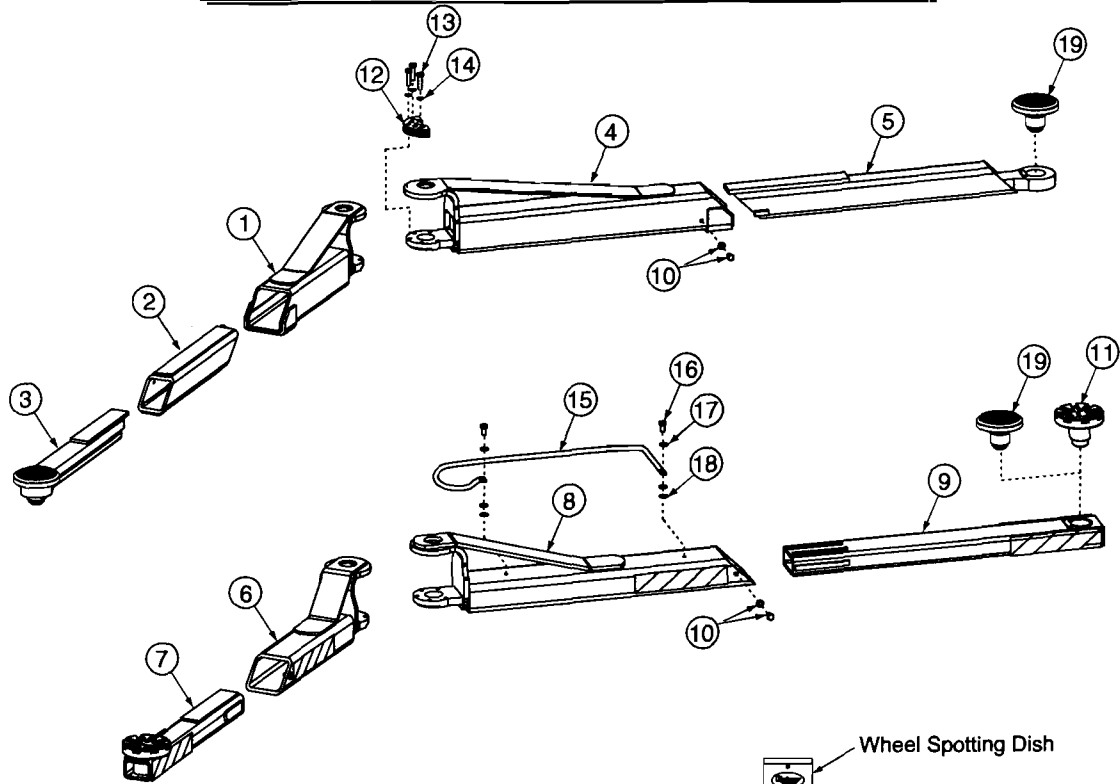
To find out if you have a **E** or **S** model Power Unit look at the **4th letter from the end** of your lift model number.

EXAMPLE: SPOA30**E**585 would be a **E Model**.

↑  
Model number can be found on a tag on the side of the lift.

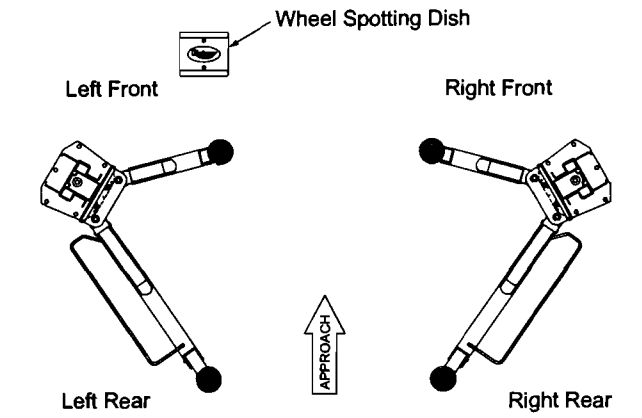


# SPOA30/SPOA40/SPO40 ARM DETAIL



### ARM DETAIL PARTS LIST

|   |  |                               |
|---|--|-------------------------------|
| 1 | Front Outer 3-Stage Arm<br>SPOA30/SPOA40 (5GX Series) .....  | N2224-1                       |
| 2 | Front Middle 3-Stage Arm<br>SPOA30/SPOA40 (5GX Series) ..... | N2220-10                      |
| 3 | Front Inner 3-Stage Arm<br>SPOA30/SPOA40 (5GX Series) .....  | N2220-6                       |
| 4 | Rear Outer Arm<br>SPOA30/SPOA40 (5GX Series) .....           | N2225-1                       |
| 5 | Rear Inner Arm<br>SPOA30/SPOA40 (5GX Series) .....           | N2225-4                       |
| 6 | Front Outer Arm<br>SPOA30.....<br>SPOA40.....<br>SPO40.....  | N2190-1<br>N2192-1<br>N2194-1 |
| 7 | Front Inner Arm<br>SPOA30.....<br>SPOA40.....<br>SPO40.....  | N284-1<br>N286-1<br>N288-1    |
| 8 | Rear Outer Arm<br>SPOA30.....<br>SPOA40.....<br>SPO40.....   | N2191-1<br>N2193-1<br>N2194-1 |
| 9 | Rear Inner Arm<br>SPOA30.....<br>SPOA40.....<br>SPO40.....   | N285-1<br>N287-1<br>N288-1    |



|    |  |                            |
|----|--|----------------------------|
| 10 | Stop Bolt Assembly<br>3/8" Internal Tooth Washer .....   | 40843                      |
|    | 3/8"-16NC x 5/8" Lg. HHCS Gr. 8, Plated .....  | 40155                      |
| 11 | Adapter Assembly .....   | FJ6166                     |
|    | Low Profile Adapter Assembly .....   | FJ6191                     |
| 12 | Restraint Gear.....  | N2122                      |
| 13 | 3/8"-16NC x 1-1/2" HHCS Gr. 5, Plated.....   | 40200                      |
| 14 | 3/8" Medium Spring Lockwasher.....   | 40818                      |
| 15 | Arm Guard<br>SPOA30 (Rear).....<br>SPOA40 (Rear).....<br>SPO40 (Left Front/Right Rear/Left Rear) ..... | N244-4<br>N246-4<br>N244-4 |
|    | SPO40 (Right Front) .....  | N247-4                     |
| 16 | 5/16"-18NC x 3/4" Lg. HHCS.....  | 40252                      |
| 17 | 5/16" Medium Spring Lockwasher .....   | 40850                      |
| 18 | 5/16" Flat Washer SAE Standard, Plated .....   | 40856                      |
| 19 | Low Profile 3-Stage Adapter .....  | FJ6202                     |

**Rotary World Headquarters**  
2700 Lanier Drive  
Madison, IN 47250, USA  
www.rotarylif.com

**North America Contact Information**  
Tech. Support: p 800.445.5438  
f 800.578.5438  
e userlink@rotarylif.com  
Sales: p 800.640.5438  
f 800.578.5438  
e userlink@rotarylif.com

**World Wide Contact Information**  
World Headquarters/USA: 1.812.273.1622  
Canada: 1.905.812.9920  
European Headquarters/Germany: +49.771.9233.0  
United Kingdom: +44.178.747.7711  
Australasia: +60.3.7660.0285  
Latin America / Caribbean: +54.3488.431.608  
Middle East / Africa: 1.812.273.1622



A DOVER COMPANY



© Rotary®, Printed in U.S.A., All Rights Reserved. Unless otherwise indicated, ROTARY, DOVER and all other trademarks are property of Dover Corporation and its affiliates.